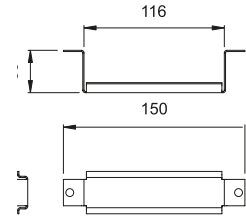
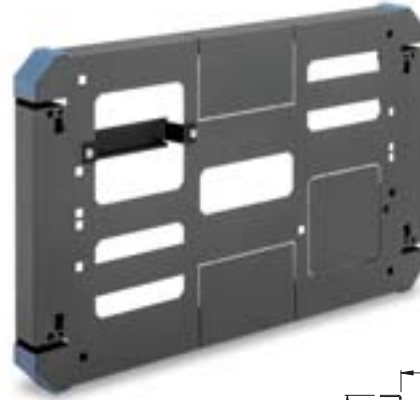


Built-in DIN rail Rail DIN intégré

- Designed in accordance to DIN 50022 and IEC 60 715. DIN rail to anchor magneto-thermal switches components to the second section of the rack.
- Manufactured in steel 1.5 mm thick.
- **Finish:** black zinc coating.
- **Packaging unit:** 1 rail and hardware mounting.

- *Comforme aux normes DIN 50022 and IEC 60 715. Permet l'installation de composants sur le second corps du coffret, pour fixation d'interrupteurs magnétothermiques, etc.*
- *Fabriqués en tôle d'acier de 1,5 mm d'épaisseur.*
- **Finition:** noir zingué.
- **Unité d'emballage:** 1 rail + visserie de montage.

Code	19"
32275002	*



19" DIN rail Rail DIN de 19"

- Designed in accordance to DIN 50022 and IEC 60 715. 19" rail for anchoring components with standard DIN fixation.
- Manufactured in steel 1,5 mm thick.
- **Finish:** yellow zinc coating.
- **Packaging unit:** 1 rail and hardware mounting.

- *Comforme aux normes DIN 50022 and IEC 60 715. Permet l'installation de composants à fixation normalisée DIN.*
- *Fabriqués en tôle d'acier de 1,5 mm d'épaisseur.*
- **Finition:** bichromaté jaune.
- **Unité d'emballage:** 1 rail DIN.

Code	19"
32155145	*

