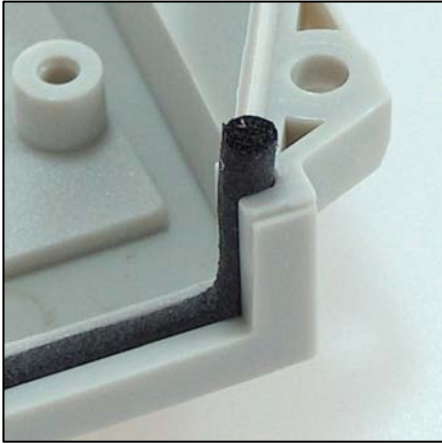
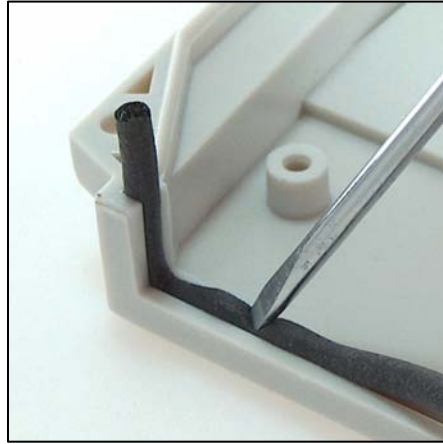


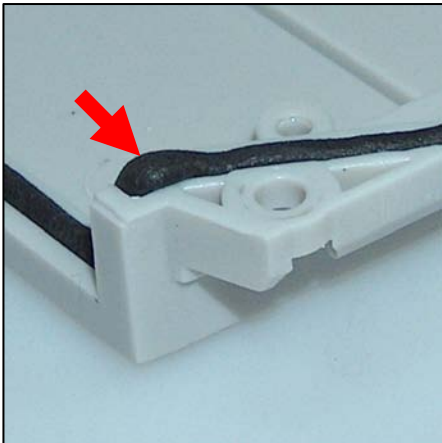
## 33 Series: Gasket Fitting Instructions Iss O 18/10/10



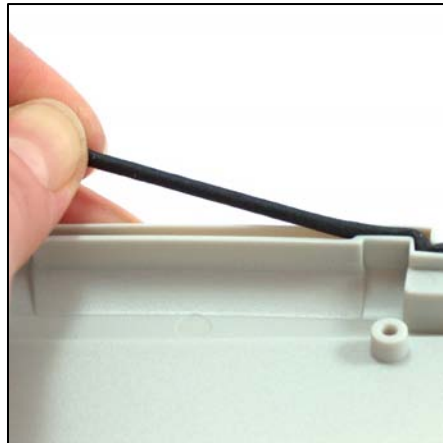
1) When fitting gasket leave 2-3mm loose end above groove



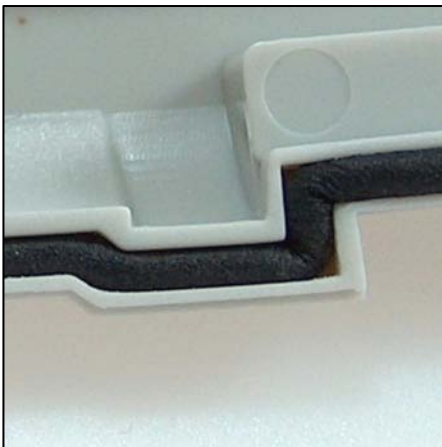
2) Use blunt tool to fit gasket taking care not to damage the gasket.



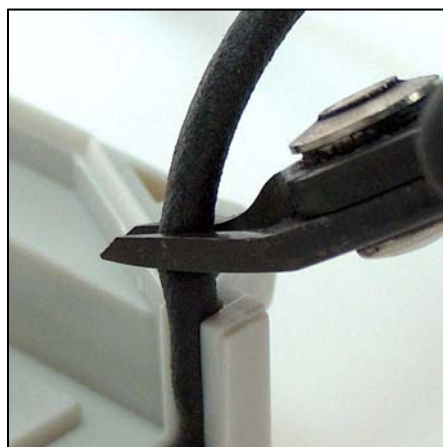
3) Leave excess gasket in the corners of enclosure



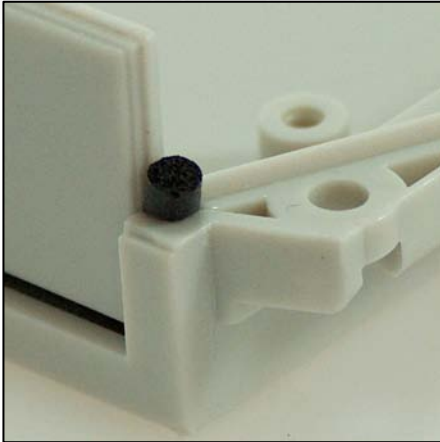
**4) Do not stretch gasket!**



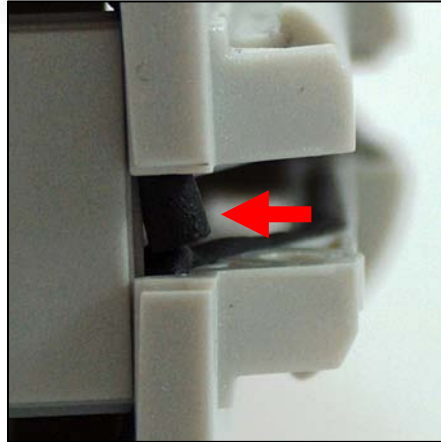
5) Ensure gasket fills in corners of the groove



6) Trim ends leaving 2-3mm above groove, repeat with other half



7) Fit panels taking care not to push loose end into groove



8) Put enclosure together ensuring top & bottom gaskets made contact

## Fitting gasket around battery compartment



9) Fit gasket around groove, trim leaving 2-3mm loose end



10) Push loose end in ensuring two ends fit together tightly in the groove



11) Fit the rest of gasket into groove



11) Ensure there are no bulges or lumps in the gasket