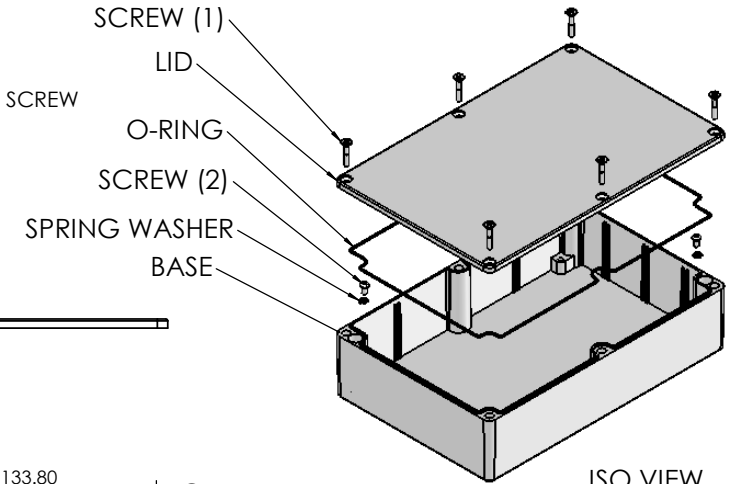


OVERALL ASSEMBLY DIMENSIONS:

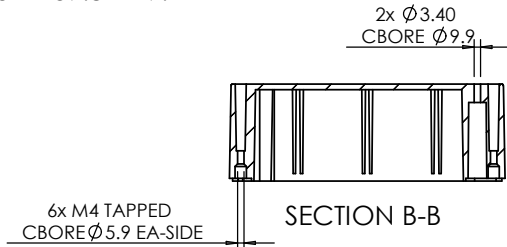
EXTERNAL - 222.5 x 145.8 x 54.7

INTERNAL - 116.5 x 139.8 x 49.2

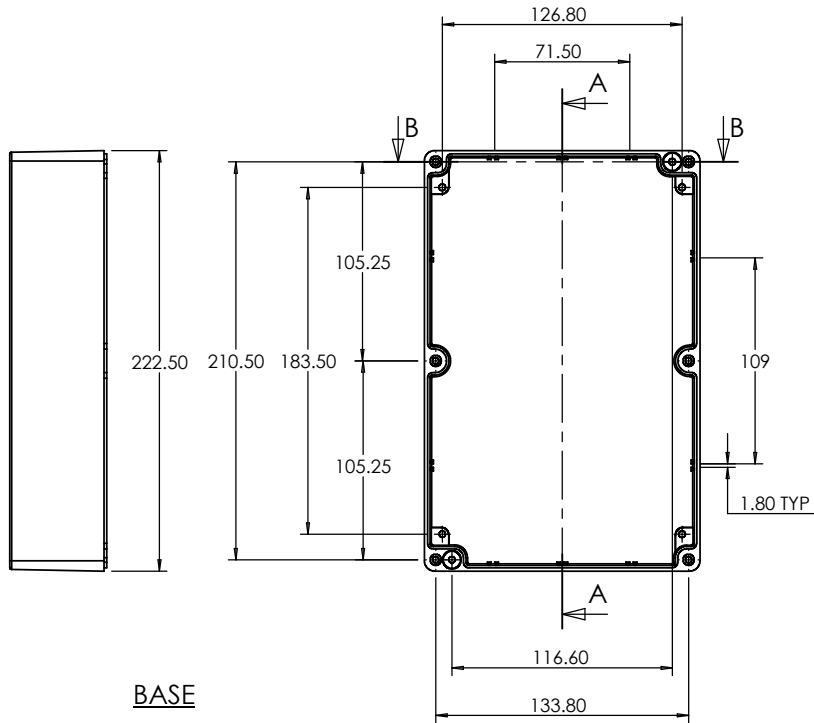
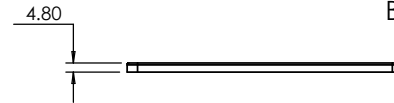
- (1) 6x M4 UNIT ASSEMBLY SCREW
- (2) 2x SELF-TAPPING INTERNAL MOUNTING SCREW



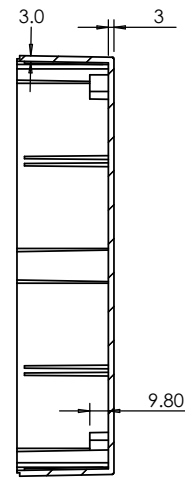
ISO VIEW
1:5



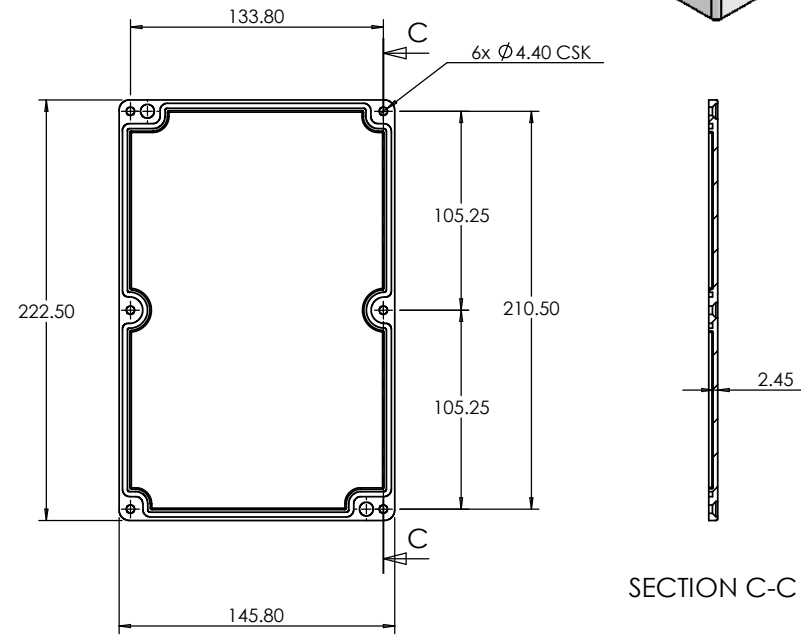
SECTION B-B



BASE

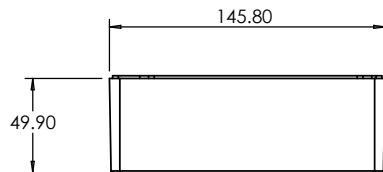


SECTION A-A



SECTION C-C

LID



<p>JAMES CARTER RD, MILDENHALL, SUFFOLK. IP28 7DE TEL: 01638 716101 FAX: 01638 716554 EMAIL: SALES@BOSS-ENCLOSURES.CO.UK WEB: WWW.BOSS-ENCLOSURES.CO.UK</p>				UNLESS OTHERWISE SPECIFIED: DIMENSIONS ARE IN MILLIMETERS		DO NOT SCALE DRAWING		REVISION. 0	
				FINISH: SMOOTH		TITLE: ASSEMBLY DRG FOR 5500-24			
DRAWN S.HARDINGE		SIGNED SJH		DATE 10/01/06		MATERIAL: DIE-CAST ALUMINIUM		DWG NO. 5500-24	
CHK'D -		-		-		PROJECTION.		SCALE: 1:4	
								SHEET 1 OF 1	

A4